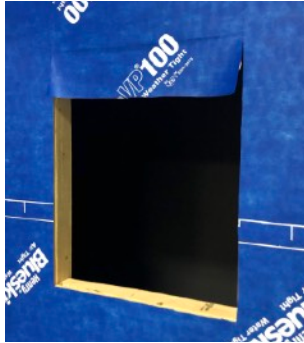


# ThermalBuck™

## Self-Adhered WRB with Furring Installation



### PREPARE WRB

Cut WRB flush to RO at jambs and sill, leaving a 4" flap at head. Cut WRB at head first, creating a flap equal to thickness of ThermalBuck.

Head flap should come down over ThermalBuck and cover the nail flange completely.



Angle cut head & sill corners 4" away from RO.



### ROLL SILL

Roll self-adhered membrane against sheathing at sill.



### MEASURE

Measure the pre-framed RO to confirm the additional 1/2" on all 4 sides (1" overall) than recommended by window manufacturer. Level & plumb, adjust RO if needed.



### MINIMIZE WASTE

Consider all RO dimensions, and plan cuts to minimize waste. Leftover pieces of ThermalBuck can be used on small windows, or to splice jambs.



### CUT

Miter the end of each piece at half the angle of the RO. (Typically 45°)

Undersize each piece 1/16" to 1/8" to allow for sealant at seams.



### DRY-FIT

Dry-Fit the pieces of ThermalBuck to make sure it fits properly, adjust if needed.

Slight gaps are needed at corners for sealant.



### AIR & WATER SEAL

Apply three 3/8" beads of recommended\* sealant to the back of each piece of ThermalBuck.

\*For recommended sealants, see FAQ's at



ThermalBuck™



## INSTALL

Starting at the sill, push ThermalBuck firmly into the rough opening along the total length to ensure you have a good seal, and 100% ooze out at all transitions.



## SEAL ENDS

Add sealant to mitered ends.



Repeat for each jamb and head piece, considering which one will be easiest to flex into place last. Ensure all corners align before nailing tongue, and adjust as needed.

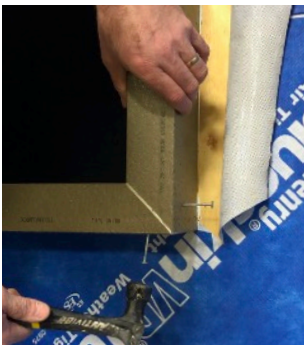
*100% ooze-out is needed at all transitions for proper water and air sealing.*



## NAIL TONGUE

Once all pieces of ThermalBuck are placed, firmly push into RO and drive a 2" roofing nail through the 1/2" tongue into the structure, every 10"-12".

Use a roofing nail gun if preferred.



## CLAMP

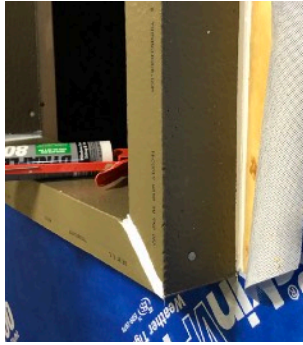
Clamp corners with 2" roofing nails if gap is more than 1/4" while the sealant cures (see sealant manufacturer's instructions).

*Do not install window until sealant has cured.*



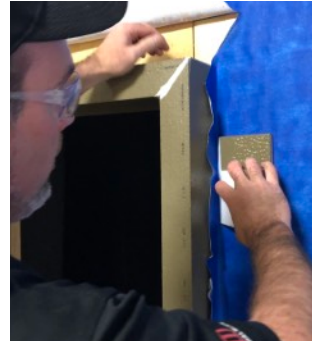
## SEAL GAPS

If 100% ooze-out did not occur at all transitions, force sealant into any voids.



## SMOOTH

Smooth sealant and remove excess.

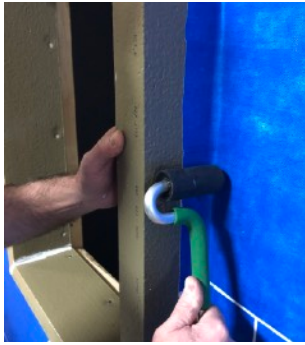


## ADHERE MEMBRANE

Wrap the self-adhered membrane up against ThermalBuck at each jamb.



**THERMALBUCK™**



## ROLL MEMBRANE

Roll self-adhered membrane against ThermalBuck at each jamb.



## SHIM

Shim on top of the ThermalBuck if required.

Use one square inch of shim per 40 lbs. window.



## INSTALL WINDOW

*Consult window manufacturer's instructions.* Fasten window through ThermalBuck with #10 screws or nails, angled slightly to ensure good penetration into the framing. Fasteners must penetrate min. 1 - 1/4" into the stud for structural attachment.



## FLASH JAMBS

Cut flashing tape to match vertical length of ThermalBuck. Apply from top to bottom, connecting the window, ThermalBuck, and min. 2" of the WRB. Roll the tape.



## HEAD FLAP

Bring self-adhered membrane head flap down over the ThermalBuck and nail flange.



## ROLL HEAD

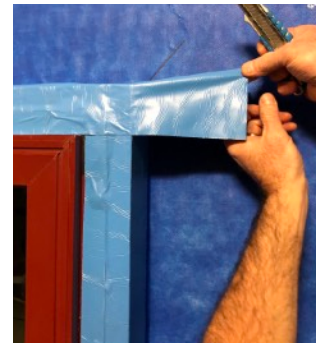
Roll self-adhered membrane against sheathing, ThermalBuck, and nail flange at head.



## FLASH HEAD

Cut flashing tape to extend min. 2" past outside edge of jamb tape.

Tape should cover nail flange, ThermalBuck, and transition on to ThermalTight panel.

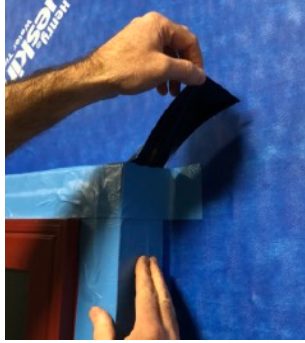


Make two horizontal cuts in the tape, following the lines of the ThermalBuck.



**THERMALBUCK™**





Wrap the face flap of tape along the side of the ThermalBuck at jambs and on to the sheathing.



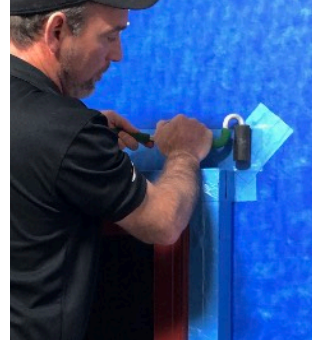
Bring the second flap down along the side of the jamb, for a shingle effect.



## ROLL TAPE

Add an additional piece of tape if needed to ensure good flashing coverage on to the self-adhered membrane.

Ensure head flashing tape is completely rolled and sealed.



## TAPE CUTS

Add an additional piece of tape to cover the angled cuts of the head flap, and press or roll the tape.

If sill corner cuts are visible, cover with flashing tape and roll.



## INTERIOR SEAL

Use spray foam or sealant to create a back dam, and complete the interior air and water seal.

Seal *both* the transition of ThermalBuck to the window and to the framing to complete the air and water seal.



## INSULATION

*Install continuous insulation panels according to insulation manufacturer's instructions.*



## STRAPPING

When strapping is specified, the ThermalBuck depth should generally be 1/2" smaller than the insulation, to accommodate both the strapping & insulation (compressed)

Adhere strapping to specified framing using fasteners to penetrate min. 1-1/4" into the structure .



## NO STRAPPING

For wall assemblies that do not call for strapping, ensure the ThermalBuck depth matches the thickness of the exterior insulation, for a flush plane for cladding

*(Pictured is assembly for strapping.)*



**THERMALBUCK™**