

# ThermalBuck Outperforms Wood Bucks 2:1

ThermalBuck reduces heat transfer  
*over 50% better than a wood window buck.*

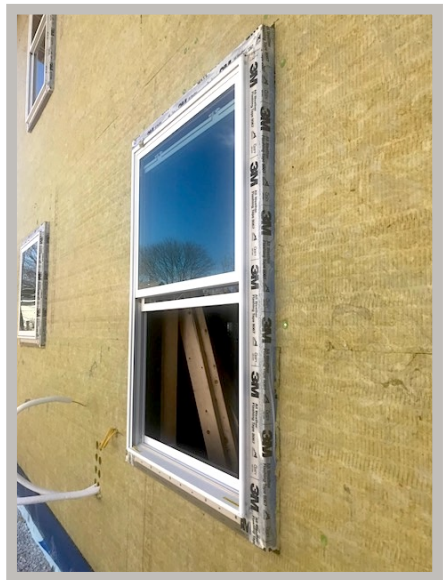
	A*	B	C
ThermalBuck	0.11°F	57.04°F	70.20°F
Wood Buck	7.88°F	41.33°F	52.44°F
Difference	7.77°F	15.72°F	17.76°F

## Temperature Sensor Points:

- A\* = Mounting point of flange on exterior
- B = Inside 1" from OSB on framing
- C = Inside 4.5" from OSB on framing

## Conditions:

Outdoor Temp. -6.67 °F  
Indoor Temp. 72.76 °F  
Flanged window with 2" rigid insulation



\* ThermalBuck reduces heat transfer vs. wood 54% at Point A.